

FOR LEASE

Zoned B-4

Wholesale Business

2331 Fortune Drive Suite 290

Lexington, KY



Property Details 1,867 SF \$13.50 / P.S.F. / Modified Gross

- Recently renovated open office
- Two private restrooms & break area
- Second floor office (no elevator)
- Plenty of on-site parking
- Close proximity to I-64/I-75 Interchange, Downtown and New Circle Road
- Located in Turner Business Center

AMY MELLINGER

859-619-5369

Amy@FortuneRealty.com

FortuneRealty.com

FORTUNE
REALTY

COMMERCIAL REAL ESTATE

900 Beasley Street
Suite 110

Lexington, KY 40509

859-293-1111

FOR LEASE

Zoned B-4

Wholesale Business

2331 Fortune Drive Suite 290
Lexington, KY



Property Photos

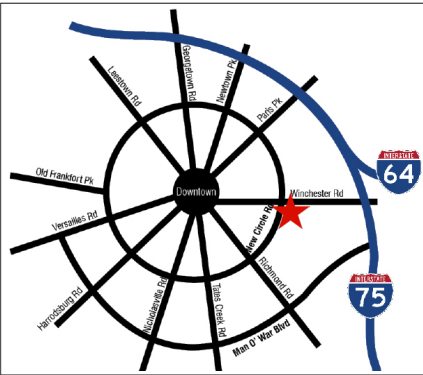


900 Beasley Street
Suite 110
Lexington, KY 40509
859-293-1111

FOR LEASE

Zoned B-4
Wholesale Business

2331 Fortune Drive Suite 290
Lexington, KY



Location Description

Located in Turner Business Center, at the corner of Fortune Drive and Winchester Road.

AMY MELLINGER

859-619-5369

Amy@FortuneRealty.com

FortuneRealty.com

**FORTUNE
REALTY**

COMMERCIAL REAL ESTATE

900 Beasley Street
Suite 110
Lexington, KY 40509
859-293-1111

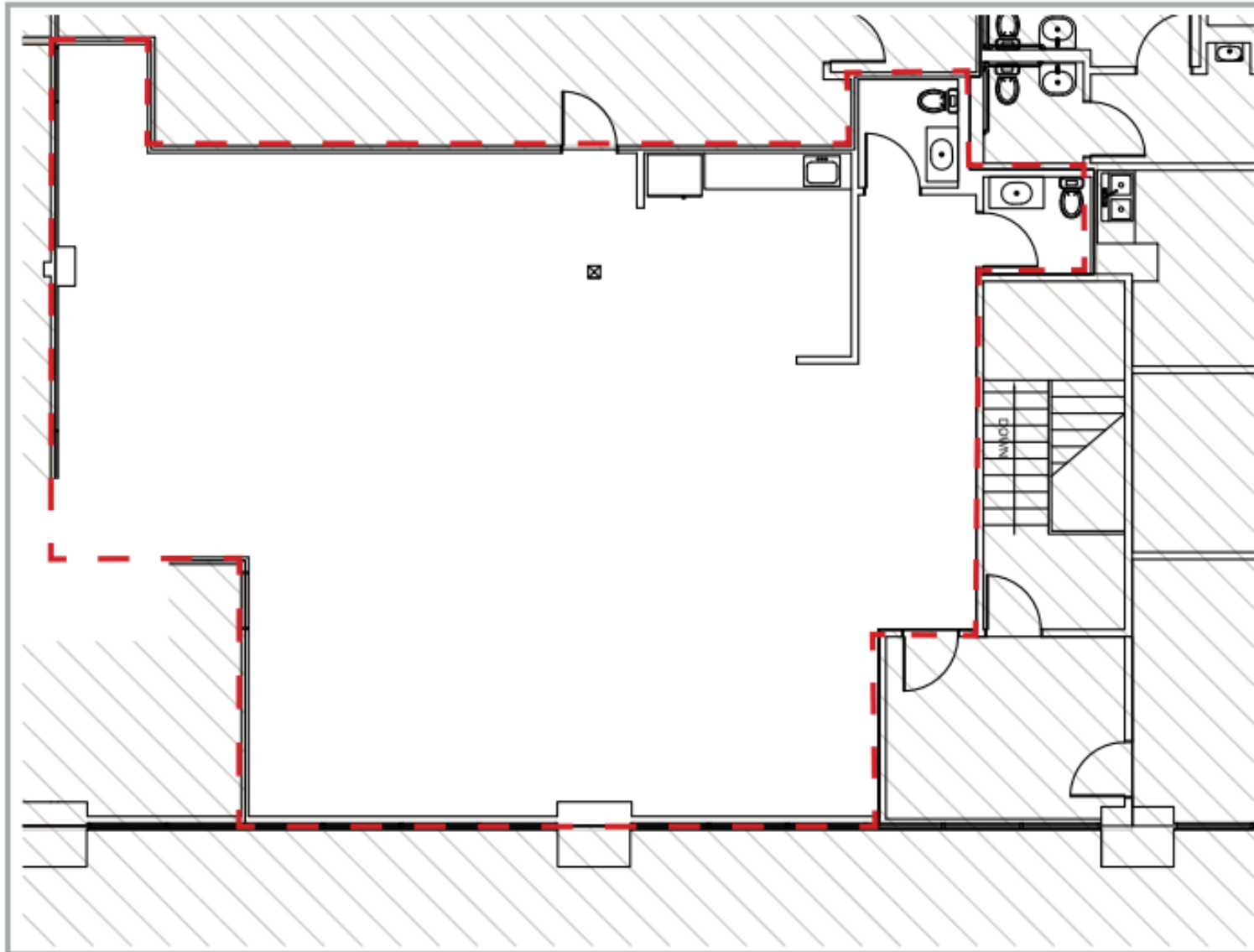
FOR LEASE

Zoned B-4

Wholesale Business

2331 Fortune Drive Suite 290

Lexington, KY



Floor Plan



900 Beasley Street
Suite 110
Lexington, KY 40509
859-293-1111