



Amy Mellinger

o 859.619.5369
e Amy@FortuneRealty.com



Liza van Dissel

c 859.420.9238
e Liza@FortuneRealty.com



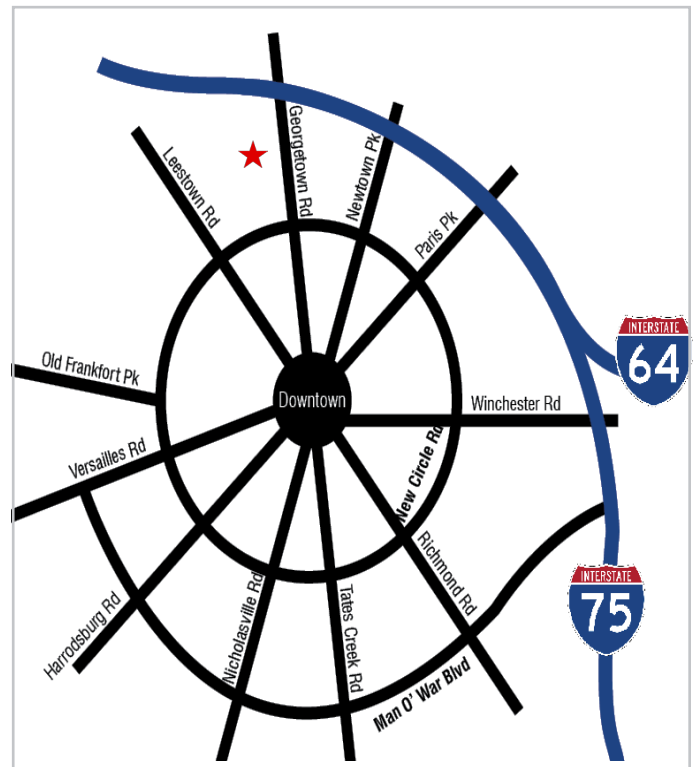
**1510 GREENDALE RD • BUILD-TO-SUIT
LEXINGTON, KY**

LIGHT INDUSTRIAL WAREHOUSE

SQUARE FEET: 121,000

SHELL RATE: \$5.95 P.S.F. TRIPLE-NET

- LANDLORD WILL DEMISE
- 14 LOADING DOCKS WITH LEVELERS
- MULTIPLE DRIVE-IN DOORS.
- CONVENIENT ACCESS TO I-75/I-64
- CUSTOMIZED FIT-UP
- 205 AVAILABLE PARKING SPACES





Amy Mellinger

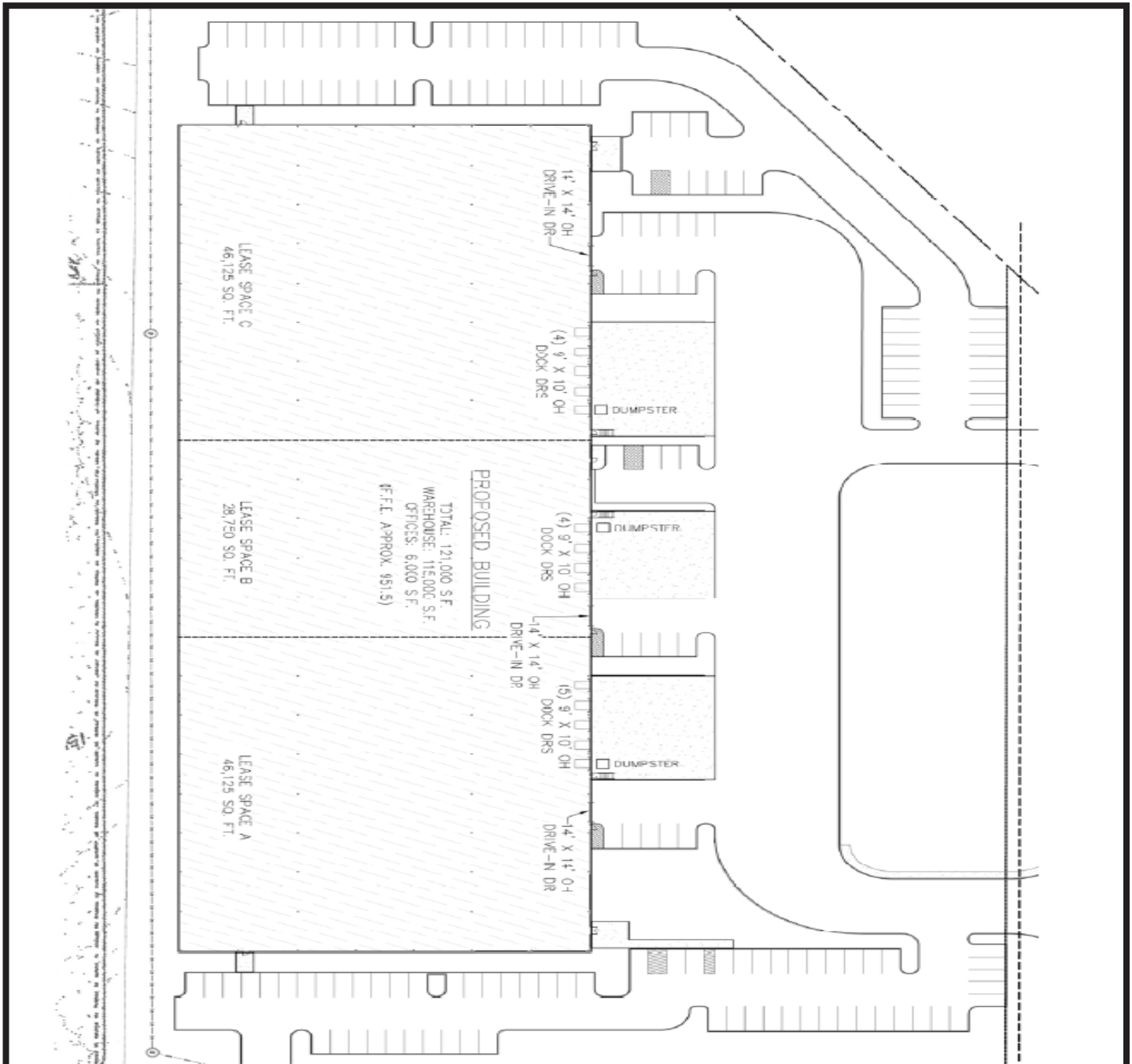
o 859.619.5369
e Amy@FortuneRealty.com



Liza van Dissel

c 859.420.9238
e Liza@FortuneRealty.com

1510 GREENDALE RD • BUILD-TO-SUIT
LEXINGTON, KY





Amy Mellinger

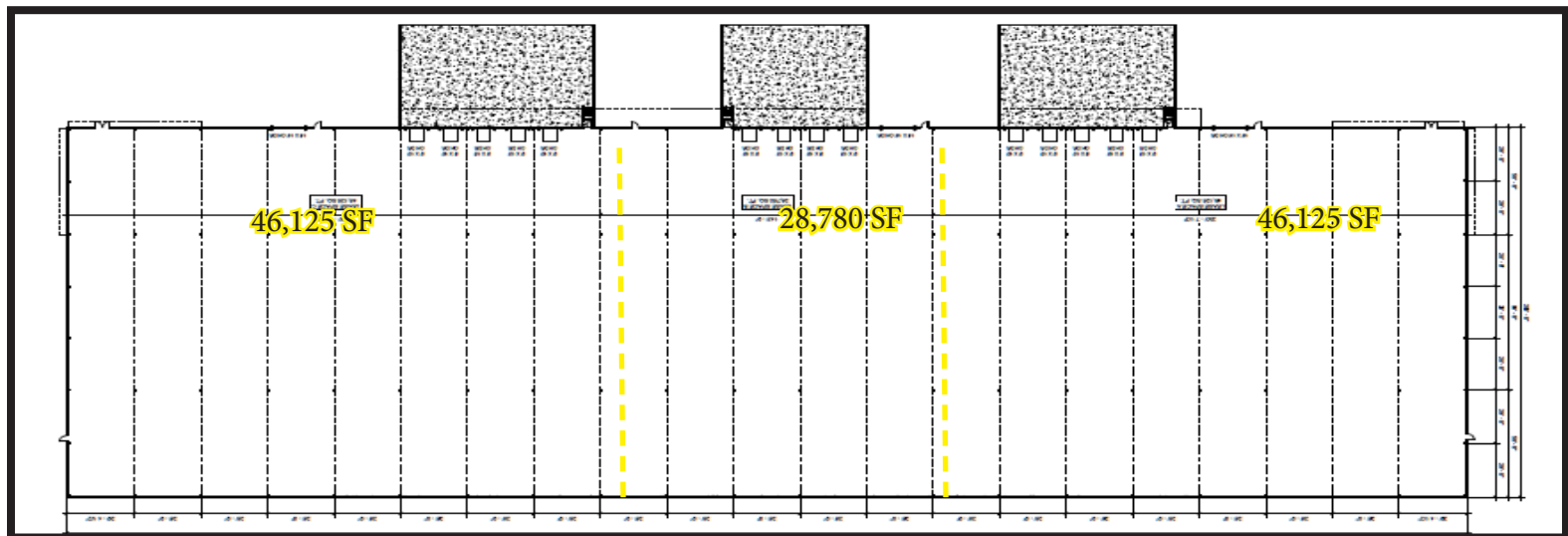
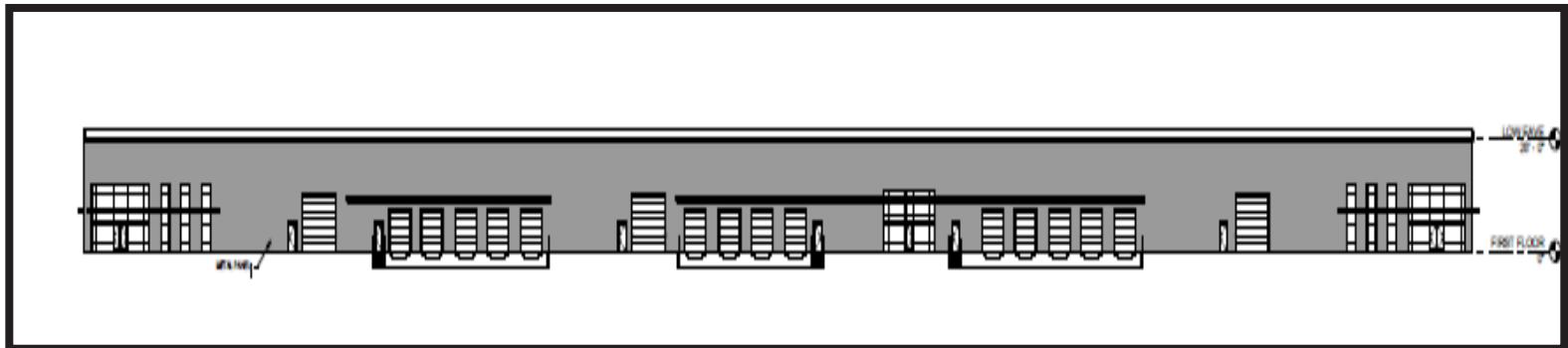
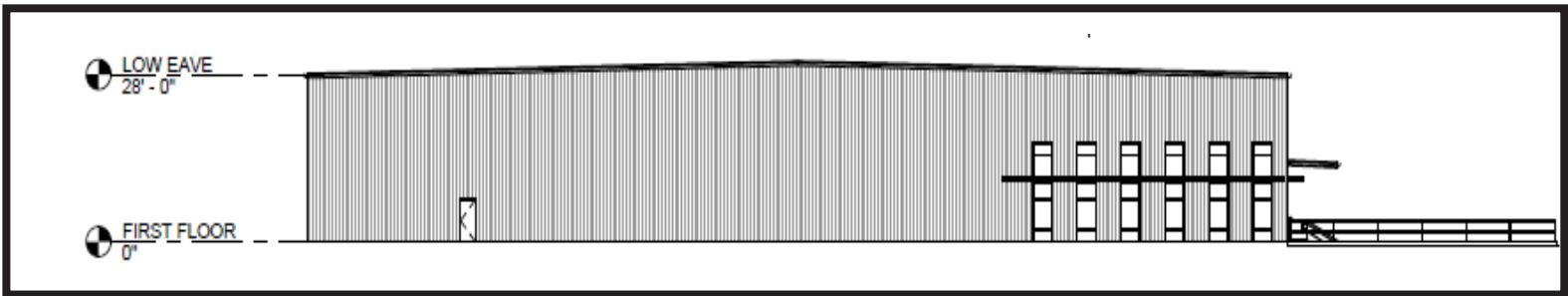
o 859.619.5369
e Amy@FortuneRealty.com



Liza van Dissel

c 859.420.9238
e Liza@FortuneRealty.com

1510 GREENDALE RD • BUILD-TO-SUIT
LEXINGTON, KY





Amy Mellinger

o 859.619.5369
e Amy@FortuneRealty.com



Liza van Dissel

c 859.420.9238
e Liza@FortuneRealty.com

1510 GREENDALE RD • BUILD-TO-SUIT
LEXINGTON, KY

